



Cruise ships in Kiel harbor

Kiel is the meeting point for cruise ships from around the world

Cruiser Menu with SIS Earth by Consist

By Bodo Krause-Traudes

Who wouldn't like to enjoy a cocktail in the casino bar or sample a tempting menu in the Bella Donna Restaurant on Deck 10 of the AIDAdiva, and give room and time to their dreams of far-away lands? If you don't have the time or the opportunity, you can still enjoy the anticipation or the memories of such an experience in the pleasant, non-rocking ambience of a Kiel restaurant on the waterfront.

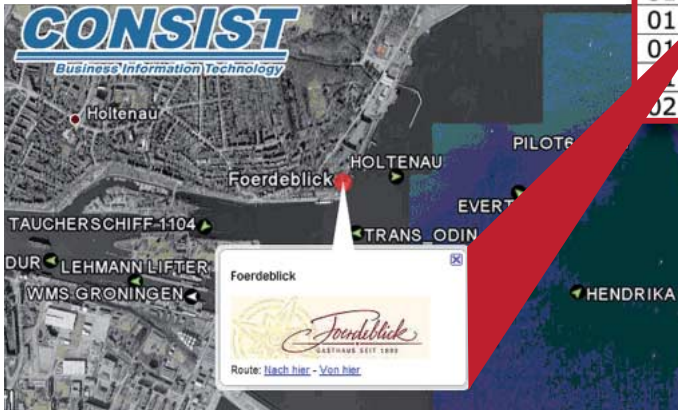
Kiel's cruise and sailing enthusiasts and tourists can enjoy a lively venue on the water this year. From the end of April to mid-Septem-

ber, the Port of Kiel will be host to over 115 cruise ships from all over the world. Then there are the tall ships during the Kieler Woche, and

of course the continuous international traffic by ferries and the Kiel Canal.

20.05.2009	Mi	19:30	24:00	MSC ORCHESTRA
20.05.2009	Mi	07:00	19:00	Mein Schiff
21.05.2009	Do	08:00	17:00	Costa Magica
21.05.2009	Do	10:00	19:00	MSC OPERA
22.05.2009	Fr	09:00	19:00	MSC ORCHESTRA
22.05.2009	Fr	06:00	17:00	Eurodam
23.05.2009	Sa	07:00	19:00	Mein Schiff
24.05.2009	So	08:00	16:00	MSC ORCHESTRA
30.05.2009	Sa	09:00	15:00	Princess Daphne
30.05.2009	Sa	08:00	17:00	Delphin Voyager
31.05.2009	So	11:00	15:30	Delphin
31.05.2009	So	08:00	16:00	MSC ORCHESTRA
01.06.2009	Mo	09:00	16:00	Mona Lisa
01.06.2009	Mo	08:00	17:00	Costa Magica
01.06.2009	Mo	10:00	19:00	MSC OPERA
02.06.2009	Di	07:00	19:00	Mein Schiff

Abstract from cruise ship plan for Kiel



photos: Consist

Picture from SIS-Earth

A particular attraction in the summer are the quays with their many ships, some as tall as large buildings in the harbor, giving Kiel a unique maritime skyline, one of

the features bringing tourists flocking to Kiel for a stay. In Kiel, you can say with some justification that you can't see the harbor for the ships and sailboats.

The individual land-based cruiser menu might look like this, then: The appetizer starts with the house aperitif in the form of a view of the aforementioned SIS Maps portal at KN, or directly at the Consist home page. After the trip to a restaurant comes the enjoyment of the main course in the form of the observation of the passing cruise ship on the SIS Earth monitors. The dessert tops off the menu in the form of a final visit to the cruise ship on one of the modern quays.

With its solutions, Consist supports a relaxed menu, and we wish you bon appetit...

The Technology

The Ship Information System (SIS) by Consist is based on the commercial product VERS, the Vessel Event & Reporting System. VERS enables the integration of processes in the maritime transportation and value creation chain. One highlight is the automated control of port logistics using secure information about arrival times of ships. With the event configuration tool, you can control your custom processes in a just-in-time fashion, distributing targeted information to participating people or partners on land or at sea.

To keep a clear overview of events, Consist has once again come up with a solution. Since January, 2009, Consist has offered the informed reader of the Kieler Nachrichten newspaper the option of observing doings on the water using the ship information system on the portal www.kn-online.de/schiffe, based on Google Maps (SIS maps). More than 500 pictures of ships are stored in the archive, the majority from the private collection of Martin Lochte-Holtgreven. And now – fresh on the table, so to speak – there is also the option of observing maritime goings-on in the restaurant on large screens or table laptops running Google Earth (SIS Earth). Our first pilot user is the restaurant „Fördeblick“ in Kiel-Holtenau, where a total of ten large monitors display SIS information about passing ships.

For further information:

Bodo Krause-Traudes
 Phone: +49 (0)431/3993-552
 E-Mail: krause-traudes@consist.de

