



VERS – Process Integration for the Maritime Industry

The Vessel Event & Reporting System – VERS – utilizes localization data (e.g. via AIS) for control of processes in the maritime industry, e.g. for calculation of ship arrival times in ports, for control of fleets, logistics and services, or passenger information.

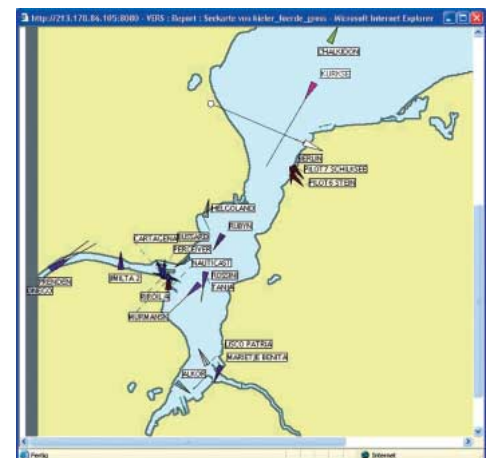
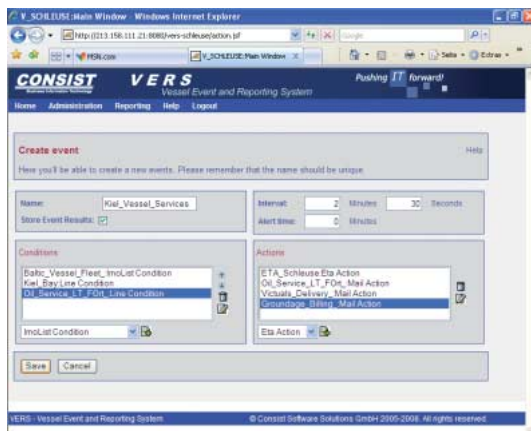
VERS offers an individual event management based on relevant information. Processes are activated just in time, and data forwarded ensuring an optimal integration of the maritime transport and value chain. VERS especially supports the delivery of exact ship location data.

Functionality

1. The **VERS Receiver Module** delivers data on exact ship locations and movements. The AIS (Automatic Identification System) is a way to generate such data, delivering both static ship data and dynamic voyage details. VERS may also use other systems for exact locating of ships.
2. The **VERS Event Configurator** collects all required data. Based on the data, many conditions can be defined to initiate automatic processes and forward relevant information.
3. The **VERS Report Configurator** generates an overview of all defined events and the activated processes.

At a glance

VERS provides the integration of processes within the maritime transport and value chain. A key element is the management of port logistics based on reliable information on ship arrival times. With the VERS Event Configurator you can automate your processes just in time and forward relevant information precisely to persons and partners involved both ashore and at sea.



AIS based traffic picture from Kiel Fjord with passage condition, recorded by VERS

The Event Configurator links events and processes.



Application examples

Port logistics - event-driven process management

- ETA reports on real-time basis
- Timing the logistics for unloading / loading
- Management of the transport chain ashore
- Automatic billing of port fees
- Communication between ports, ship owners, and ships

Maritime services

- Just-in-time delivery
- Pro-active sales and services for incoming ships
 - Maintenance
 - Bunkers and provisioning
- Innovative services
 - Automated route and itinerary information for ferry service
 - Passenger information
 - Fleet control via real-time position report

Port authorities, coast guards - traffic control

- Safety and security (ISPS)
- Collision avoidance, pilot assistance
- Casualty management
- Integration with radar based systems
- Automatic documentation of ship movements
- Automatic billing of port fees

Integration solution VERS

VERS is equipped with a web interface for both the Event and Report Configurators. The event services for process management and information forwarding run on a central server. The integration of processes and information is based on modern web service technology, or via direct data access. The access to legacy applications or databases is supported by Attunity Connect. VERS may be complemented by secure communication with full authentication and encryption functionality.

Have we raised your interest?

Please contact us to get detailed information regarding our solution. In a free joint workshop, we will evaluate your specific potential in using VERS.

AIS

AIS is the abbreviation for the Universal Shipborne Automatic Identification System. Via VHF radio technology, most sea-going ships are required to transmit their identification together with voyage data and dynamic navigational data to other ships and land-based receivers.

The data exchange protocol has been standardized and for world-wide usage and is supported by ship-based AIS transmitters of many different vendors.

Your Contact

Consist
Software Solutions GmbH
Falklandstr. 1-3, 24159 Kiel,
Germany

Bodo Krause-Traudes

+49 (0)4 31 / 39 93 - 552
krause-traudes
@consist.de
www.consist.de



Pushing **IT** forward!

CONSIST
Business Information Technology